

# ETU-LINK TECHNOLOGY CO., LTD



The mainstream of optical fiber communication products provider

[Http://www.etulinktechnology.com](http://www.etulinktechnology.com)

Email:sales@etulinktechnology.com



# Products

# ETU-LINK TECHNOLOGY CO., LTD

**Name:** LC/PC-LC/PC MM OM3 Patch Cord

## Specification:

**Insertion loss:**  $\leq 0.2\text{dB}$       **Return loss:**  $\leq -35\text{dB}$       **Repeatable:** 0.1dB (1000)

**Temperature range:**  $-40^{\circ}\text{C} \sim 85^{\circ}\text{C}$

**Features:** High density applications

Snap-on locking element for easy and secure handling

Suitable for high power applications

Crimp sets for tubes and cables

Multimode 50/125um, Simplex & duplex are available

## Application:

Data processing network      Telecommunication networks      CATV

LAN (including FTTH and FTTD)

**Standard:** Telcordia GR-326-CORE

**Core:** Simplex / Duplex

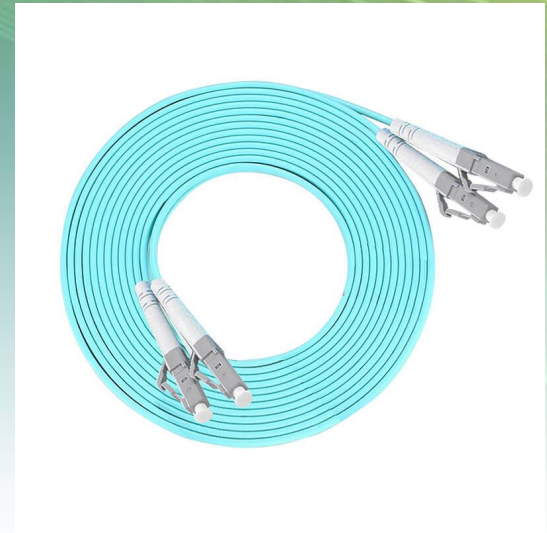
**Boot (cable) Size :** 0.9mm/1.8mm/2.0mm/3.0mm

**Boot Color :** White for MM

**Cable Color :** Aqua

**Length: Customized** (1/2/3/5/10/15/20/30/40/50meters)

**Cable Material:** PVC, LSZH, OFNP



# Products

# ETU-LINK TECHNOLOGY CO., LTD

**Name:** LC/PC-SC/PC MM OM3 Patch Cord

## Specification:

**Insertion loss:**  $\leq 0.2\text{dB}$       **Return loss:**  $\leq -35\text{dB}$       **Repeatable:**  $0.1\text{dB}$  (1000)

**Temperature range:**  $-40^{\circ}\text{C}\sim 85^{\circ}\text{C}$

**Features:** High density applications

Snap-on locking element for easy and secure handling

Suitable for high power applications

Crimp sets for tubes and cables

Multimode 50/125um, Simplex & duplex are available

## Application:

Data processing network      Telecommunication networks      CATV

LAN (including FTTH and FTTD)

**Standard:** Telcordia GR-326-CORE

**Core:** Simplex / Duplex

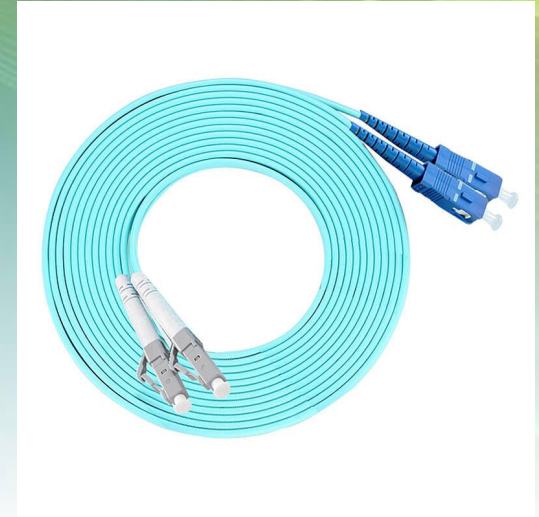
**Boot (cable) Size :** 0.9mm/1.8mm/2.0mm/3.0mm

**Boot Color :** White for MM LC/ Blue for MM SC

**Cable Color :** Aqua

**Length: Customized** (1/2/3/5/10/15/20/30/40/50meters)

**Cable Material:** PVC, LSZH, OFNP





# Products

# ETU-LINK TECHNOLOGY CO., LTD

**Name:** LC/PC-LC/PC MM Patch Cord

## Specification:

**Insertion loss:**  $\leq 0.2\text{dB}$       **Return loss:**  $\leq -35\text{dB}$       **Repeatable:**  $0.1\text{dB}$  (1000)

**Temperature range:**  $-40^{\circ}\text{C}\sim 85^{\circ}\text{C}$

**Features:** High density applications

Snap-on locking element for easy and secure handling

Suitable for high power applications

Crimp sets for tubes and cables

Multimode 50/125um or 62.5/125um, Simplex & duplex are available

## Application:

Data processing network      Telecommunication networks      CATV

LAN (including FTTH and FTTD)

**Standard:** Telcordia GR-326-CORE

**Core:** Simplex / Duplex

**Boot (cable) Size :** 0.9mm/1.8mm/2.0mm/3.0mm      **Boot Color :** White for MM      **Cable Color :** Orange

**Length: Customized** (1/2/3/5/10/15/20/30/40/50meters)      **Cable Material:** PVC, LSZH, OFNP



# Products

# ETU-LINK TECHNOLOGY CO., LTD

**Name:** LC/PC-SC/PC MM Patch Cord

**Specification:**

**Insertion loss:**  $\leq 0.2\text{dB}$     **Return loss:**  $\leq -35\text{dB}$     **Repeatable:** 0.1dB (1000)

**Temperature range:**  $-40^{\circ}\text{C}\sim 85^{\circ}\text{C}$

**Features:** High density applications

Snap-on locking element for easy and secure handling

Suitable for high power applications

Crimp sets for tubes and cables

Multimode 50/125um or 62.5/125um, Simplex & duplex are available

**Application:**

Data processing network    Telecommunication networks    CATV

LAN (including FTTH and FTTD)

**Standard:** Telcordia GR-326-CORE

**Core:** Simplex / Duplex

**Boot (cable) Size :** 0.9mm/1.8mm/2.0mm/3.0mm

**Boot Color :** White for MM LC, Beige for MM SC

**Cable Color :** Orange

**Length: Customized** (1/2/3/5/10/15/20/30/40/50meters)

**Cable Material:** PVC, LSZH, OFNP



# Products

# ETU-LINK TECHNOLOGY CO., LTD

**Name:** SC/PC-SC/PC MM Patch Cord

## Specification:

**Insertion loss:**  $\leq 0.2\text{dB}$       **Return loss:**  $\leq -35\text{dB}$       **Repeatable:** 0.1dB (1000)

**Temperature range:**  $-40^{\circ}\text{C} \sim 85^{\circ}\text{C}$

**Features:** High density applications

Snap-on locking element for easy and secure handling

Suitable for high power applications

Crimp sets for tubes and cables

Multimode 50/125um or 62.5/125um, Simplex & duplex are available

## Application:

Data processing network      Telecommunication networks      CATV

LAN (including FTTH and FTTD)

**Standard:** Telcordia GR-326-CORE

**Core:** Simplex / Duplex

**Boot (cable) Size :** 0.9mm/1.8mm/2.0mm/3.0mm

**Boot Color :** Beige for MM

**Cable Color :** Orange

**Length: Customized** (1/2/3/5/10/15/20/30/40/50meters)

**Cable Material:** PVC, LSZH, OFNP





# Products

# ETU-LINK TECHNOLOGY CO., LTD

**Name:** ST/PC-LC/PC MM Patch Cord

## Specification:

**Insertion loss:**  $\leq 0.2\text{dB}$     **Return loss:**  $\leq -35\text{dB}$     **Repeatable:**  $0.1\text{dB}$  (1000)

**Temperature range:**  $-40^{\circ}\text{C}\sim 85^{\circ}\text{C}$

**Features:** High density applications

Snap-on locking element for easy and secure handling

Suitable for high power applications

Crimp sets for tubes and cables

Multimode 50/125um or 62.5/125um ,Simplex & duplex are available

## Application:

Data processing network    Telecommunication networks    CATV

LAN (including FTTH and FTTD)

**Standard:** Telcordia GR-326-CORE

**Core:** Simplex / Duplex

**Boot (cable) Size :** 0.9mm/1.8mm/2.0mm/3.0mm    **Boot Color :** White for MM LC/ Black for MM ST    **Cable Color :** Orange

**Length: Customized** (1/2/3/5/10/15/20/30/40/50meters)    **Cable Material:** PVC, LSZH, OFNP



# Products

# ETU-LINK TECHNOLOGY CO., LTD

**Name:** ST/PC-SC/PC MM Patch Cord

## Specification:

**Insertion loss:**  $\leq 0.2\text{dB}$     **Return loss:**  $\leq -35\text{dB}$     **Repeatable:**  $0.1\text{dB}$  (1000)

**Temperature range:**  $-40^{\circ}\text{C}\sim 85^{\circ}\text{C}$

**Features:** High density applications

Snap-on locking element for easy and secure handling

Suitable for high power applications

Crimp sets for tubes and cables

Multimode 50/125um or 62.5/125um, Simplex & duplex are available

## Application:

Data processing network    Telecommunication networks    CATV

LAN (including FTTH and FTTD)

**Standard:** Telcordia GR-326-CORE

**Core:** Simplex / Duplex

**Boot (cable) Size :** 0.9mm/1.8mm/2.0mm/3.0mm    **Boot Color :** Beige for MM SC/ Black for MM ST    **Cable Color :** Orange

**Length: Customized** (1/2/3/5/10/15/20/30/40/50meters)    **Cable Material:** PVC, LSZH, OFNP





# Products

# ETU-LINK TECHNOLOGY CO., LTD

**Name:** ST/PC-ST/PC MM Patch Cord

## Specification:

**Insertion loss:**  $\leq 0.2\text{dB}$       **Return loss:**  $\leq -35\text{dB}$       **Repeatable:** 0.1dB (1000)

**Temperature range:**  $-40^{\circ}\text{C}\sim 85^{\circ}\text{C}$

**Features:** High density applications

Snap-on locking element for easy and secure handling

Suitable for high power applications

Crimp sets for tubes and cables

Multimode 50/125um or 62.5/125um

## Application:

Data processing network      Telecommunication networks      CATV

LAN (including FTTH and FTTD)

**Standard:** Telcordia GR-326-CORE

**Core:** Simplex / Duplex

**Boot (cable) Size :** 0.9mm/1.8mm/2.0mm/3.0mm

**Boot Color :** Black for MM

**Cable Color :** Orange

**Length: Customized** (1/2/3/5/10/15/20/30/40/50meters)

**Cable Material:** PVC, LSZH, OFNP



# Products

# ETU-LINK TECHNOLOGY CO., LTD

**Name:** LC/UPC-LC/UPC SM Patch Cord

**Specification:**

**Insertion loss:**  $\leq 0.2\text{dB}$     **Return loss:**  $\leq -50\text{dB(PC)}$     **Repeatable:**  $0.1\text{dB}$  (1000)

**Temperature range:**  $-40^{\circ}\text{C}\sim 85^{\circ}\text{C}$

**Features:** Coupling nut radial track minimizes the rotation needed tapping mate the connector

Any cable length option

Simplex & duplex are available

SM 9/125um G652D / G657A1 /G657A2

**Application:**

Data processing network    Telecommunication networks    CATV

LAN (including FTTH and FTTD)

**Standard:** Telcordia-GR-326 and IEC standards    **Core:** Simplex / Duplex

**Boot (cable) Size :** 0.9mm/1.8mm/2.0mm/3.0mm    **Boot color:** White for SM LC    **Cable Color:** Yellow

**Length:** Customized ( 1/2/3/5/10/15/20/30/40/50meters)

**Cable Material:** PVC, LSZH, OFNP



# Products

# ETU-LINK TECHNOLOGY CO., LTD

**Name:** LC/UPC-SC/UPC SM Patch Cord

**Specification:**

**Insertion loss:**  $\leq 0.2\text{dB}$     **Return loss:**  $\leq -50\text{dB(PC)}$     **Repeatable:**  $0.1\text{dB}$  (1000)

**Temperature range:**  $-40^{\circ}\text{C}\sim 85^{\circ}\text{C}$

**Features:** Coupling nut radial track minimizes the rotation needed tapping mate the connector

Any cable length option

Simplex & duplex are available

SM 9/125um G652D / G657A1 /G657A2

**Application:**

Data processing network    Telecommunication networks    CATV

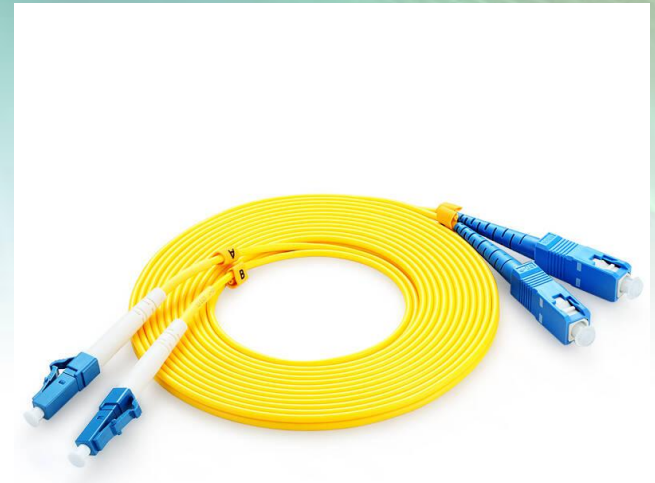
LAN (including FTTH and FTTD)

**Standard:** Telcordia-GR-326 and IEC standards    **Core:** Simplex / Duplex

**Boot (cable) Size :** 0.9mm/1.8mm/2.0mm/3.0mm    **Boot color:** White for SM LC, Blue for SM SC    **Cable Color:** Yellow

**Length:** Customized ( 1/2/3/5/10/15/20/30/40/50meters)

**Cable Material:** PVC, LSZH, OFNP





# Products

# ETU-LINK TECHNOLOGY CO., LTD

**Name:** SC/UPC-SC/UPC SM Patch Cord

**Specification:**

**Insertion loss:**  $\leq 0.2\text{dB}$     **Return loss:**  $\leq -50\text{dB(PC)}$     **Repeatable:**  $0.1\text{dB}$  (1000)

**Temperature range:**  $-40^{\circ}\text{C}\sim 85^{\circ}\text{C}$

**Features:** Coupling nut radial track minimizes the rotation needed tapping mate the connector

Any cable length option

Simplex & duplex are available

SM 9/125um G652D / G657A1 /G657A2

**Application:**

Data processing network    Telecommunication networks    CATV

LAN (including FTTH and FTTD)

**Standard:** Telcordia-GR-326 and IEC standards

**Core:** Simplex / Duplex

**Boot (cable) Size :** 0.9mm/1.8mm/2.0mm/3.0mm

**Boot color:** Blue for SM SC

**Cable Color:** Yellow

**Length:** Customized ( 1/2/3/5/10/15/20/30/40/50meters)

**Cable Material:** PVC, LSZH, OFNP



# Products

# ETU-LINK TECHNOLOGY CO., LTD

**Name:** ST/UPC-ST/UPC SM Patch Cord

**Specification:**

**Insertion loss:**  $\leq 0.2\text{dB}$     **Return loss:**  $\leq -50\text{dB(PC)}$     **Repeatable:**  $0.1\text{dB}$  (1000)

**Temperature range:**  $-40^{\circ}\text{C}\sim 85^{\circ}\text{C}$

**Features:** Coupling nut radial track minimizes the rotation needed tapping mate the connector

Any cable length option

Simplex & duplex are available

SM 9/125um G652D / G657A1 /G657A2

**Application:**

Data processing network    Telecommunication networks    CATV

LAN (including FTTH and FTTD)

**Standard:** Telcordia-GR-326 and IEC standards

**Core:** Simplex / Duplex

**Boot (cable) Size :** 0.9mm/1.8mm/2.0mm/3.0mm

**Boot color:** Black for SM ST

**Cable Color:** Yellow

**Length:** Customized ( 1/2/3/5/10/15/20/30/40/50meters)

**Cable Material:** PVC, LSZH, OFNP



# Products

# ETU-LINK TECHNOLOGY CO., LTD

**Name:** LC/APC-LC/APC SM Patch Cord

## Specification:

**Insertion loss:**  $\leq 0.3\text{dB}$     **Return loss:**  $\leq -60\text{dB}$     **Repeatable:** 0.1dB (1000)

**Temperature range:**  $-40^{\circ}\text{C}\sim 85^{\circ}\text{C}$

**Features:** High density applications

Snap-on locking element for easy and secure handling

Suitable for high power applications

Crimp sets for tubes and cables

Single mode 9/125um G652D / G657A1 /G657A2

## Application:

Data processing network    Telecommunication networks    CATV

LAN (including FTTH and FTTD)

**Standard:** Telcordia GR-326-CORE

**Core:** Simplex / Duplex

**Boot (cable) Size :** 0.9mm/1.8mm/2.0mm/3.0mm

**Boot Color :** Green for SM

**Cable Color :** Yellow

**Length: Customized** (1/2/3/5/10/15/20/30/40/50meters)

**Cable Material:** PVC, LSZH, OFNP





# Products

# ETU-LINK TECHNOLOGY CO., LTD

**Name:** LC/APC-SC/APC SM Patch Cord

## Specification:

**Insertion loss:**  $\leq 0.3\text{dB}$     **Return loss:**  $\leq -60\text{dB}$     **Repeatable:**  $0.1\text{dB}$  (1000)

**Temperature range:**  $-40^{\circ}\text{C}\sim 85^{\circ}\text{C}$

**Features:** High density applications

Snap-on locking element for easy and secure handling

Suitable for high power applications

Crimp sets for tubes and cables

Single mode 9/125um G652D / G657A1 /G657A2

## Application:

Data processing network    Telecommunication networks    CATV

LAN (including FTTH and FTTD)

**Standard:** Telcordia GR-326-CORE

**Core:** Simplex / Duplex

**Boot (cable) Size :** 0.9mm/1.8mm/2.0mm/3.0mm

**Boot Color :** Green for SM

**Cable Color :** Yellow

**Length: Customized** (1/2/3/5/10/15/20/30/40/50meters)

**Cable Material:** PVC, LSZH, OFNP



# Products

# ETU-LINK TECHNOLOGY CO., LTD

**Name:** LC/UPC-SC/APC SM Patch Cord

## Specification:

**Insertion loss:**  $\leq 0.3\text{dB}$  (APC) /  $\leq 0.2\text{dB}$ (UPC)

**Return loss:**  $\leq -60\text{dB}$ (APC) /  $\leq -50\text{dB}$ (PC)

**Repeatable:** 0.1dB (1000)

**Temperature range:**  $-40^{\circ}\text{C} \sim 85^{\circ}\text{C}$

**Features:** High density applications

Snap-on locking element for easy and secure handling

Suitable for high power applications

Crimp sets for tubes and cables

Single mode 9/125um G652D / G657A1 /G657A2

## Application:

Data processing network    Telecommunication networks    CATV

LAN (including FTTH and FTTD)

**Standard:** Telcordia GR-326-CORE

**Core:** Simplex / Duplex

**Boot (cable) Size :** 0.9mm/1.8mm/2.0mm/3.0mm

**Boot Color :** Green for SM

**Cable Color :** Yellow

**Length: Customized** (1/2/3/5/10/15/20/30/40/50meters)

**Cable Material:** PVC, LSZH, OFNP



# Products

# ETU-LINK TECHNOLOGY CO., LTD

**Name:** LC/UPC-SC/APC SM Patch Cord

## Specification:

**Insertion loss:**  $\leq 0.3\text{dB}$  (APC) /  $\leq 0.2\text{dB}$ (UPC)

**Return loss:**  $\leq -60\text{dB}$ (APC) /  $\leq -50\text{dB}$ (PC)

**Repeatable:** 0.1dB (1000)

**Temperature range:**  $-40^{\circ}\text{C} \sim 85^{\circ}\text{C}$

**Features:** High density applications

Snap-on locking element for easy and secure handling

Suitable for high power applications

Crimp sets for tubes and cables

Single mode 9/125um G652D / G657A1 /G657A2

## Application:

Data processing network    Telecommunication networks    CATV

LAN (including FTTH and FTTD)

**Standard:** Telcordia GR-326-CORE

**Core:** Simplex / Duplex

**Boot (cable) Size :** 0.9mm/1.8mm/2.0mm/3.0mm

**Boot Color :** White for SM 90degree

**Cable Color :** Yellow

**Length: Customized** (0.5/1/2/3/5/10/15/20/30/40/50meters)

**Cable Material:** PVC, LSZH, OFNP



# Products

# ETU-LINK TECHNOLOGY CO., LTD

**Name:** SC/APC-SC/APC SM Patch Cord

## Specification:

**Insertion loss:**  $\leq 0.3\text{dB}$     **Return loss:**  $\leq -60\text{dB}$     **Repeatable:** 0.1dB (1000)

**Temperature range:**  $-40^{\circ}\text{C}\sim 85^{\circ}\text{C}$

**Features:** High density applications

Snap-on locking element for easy and secure handling

Suitable for high power applications

Crimp sets for tubes and cables

Single mode 9/125um G652D / G657A1 /G657A2

## Application:

Data processing network    Telecommunication networks    CATV

LAN (including FTTH and FTTD)

**Standard:** Telcordia GR-326-CORE

**Core:** Simplex / Duplex

**Boot (cable) Size :** 0.9mm/1.8mm/2.0mm/3.0mm

**Boot Color :** Green for SM

**Cable Color :** Yellow

**Length: Customized** (1/2/3/5/10/15/20/30/40/50meters)

**Cable Material:** PVC, LSZH, OFNP



# Products

# ETU-LINK TECHNOLOGY CO., LTD

**Name:** FC/APC-FC/APC SM Patch Cord

**Specification:**

**Insertion loss:**  $\leq 0.3\text{dB}$     **Return loss:**  $\leq -60\text{dB}$     **Repeatable:** 0.1dB (1000)

**Temperature range:**  $-40^{\circ}\text{C}\sim 85^{\circ}\text{C}$

**Features:** High density applications

Snap-on locking element for easy and secure handling

Suitable for high power applications

Crimp sets for tubes and cables

Single mode 9/125um G652D / G657A1 /G657A2



**Application:**

Data processing network    Telecommunication networks    CATV

LAN (including FTTH and FTTD)

**Standard:** Telcordia GR-326-CORE

**Core:** Simplex / Duplex

**Boot (cable) Size :** 0.9mm/1.8mm/2.0mm/3.0mm

**Boot Color :** Green for SM

**Cable Color :** Yellow

**Length: Customized** (1/2/3/5/10/15/20/30/40/50meters)

**Cable Material:** PVC, LSZH, OFNP

# Products

# ETU-LINK TECHNOLOGY CO., LTD

**Name:** LC/UPC-FC/UPC SM Patch Cord

## Specification:

**Insertion loss:**  $\leq 0.2\text{dB}$     **Return loss:**  $\leq -50\text{dB(PC)}$     **Repeatable:**  $0.1\text{dB}$  (1000)

**Temperature range:**  $-40^{\circ}\text{C}\sim 85^{\circ}\text{C}$

**Features:** High density applications

Snap-on locking element for easy and secure handling

Suitable for high power applications

Crimp sets for tubes and cables

Single mode 9/125um G652D / G657A1 /G657A2

## Application:

Data processing network    Telecommunication networks    CATV

LAN (including FTTH and FTTD)

**Standard:** Telcordia GR-326-CORE

**Core:** Simplex / Duplex

**Boot (cable) Size :** 0.9mm/1.8mm/2.0mm/3.0mm

**Boot Color :** Green for SM

**Cable Color :** Yellow

**Length: Customized** (1/2/3/5/10/15/20/30/40/50meters)

**Cable Material:** PVC, LSZH, OFNP





# Products

# ETU-LINK TECHNOLOGY CO., LTD

**Name:** ST/UPC-ST/UPC SM Patch Cord

**Specification:**

**Insertion loss:**  $\leq 0.2\text{dB}$       **Return loss:**  $\leq -50\text{dB}$       **Repeatable:** 0.1dB (1000)

**Temperature range:**  $-40^{\circ}\text{C}\sim 85^{\circ}\text{C}$

**Features:** Made by high precision lapping machines surface

lapping technique for the

lowest insertion loss and high return loss Meet IEC, JIS,

Stable and high quality

Threaded metallic coupling provides durable reliable connections

Custom assemblies and OEM available upon request

**Application:**

Data processing network    Telecommunication networks    CATV

LAN (including FTTH and FTTH)

**Standard:** Telcordia GR-326-CORE

**Cable diameter:** 0.9mm/2.0mm/3.0mm      **Boot color:** Black for SM

**Cable Color:** Yellow

**Length:** Customized ( 1/2/3/5/10/15/20/30/40/50meters)

**Cable Material:** PVC, LSZH, OFNP



<http://www.etulinktechnology.com>

[Email:sales@etulinktechnology.com](mailto:sales@etulinktechnology.com)

# Products

# ETU-LINKTECHNOLOGY CO., LTD

**Name:** ST/UPC-ST/UPC MM Patch Cord

**Specification:**

**Insertion loss:**  $\leq 0.2\text{dB}$     **Return loss:**  $\leq -35\text{dB(PC)}$     **Repeatable:**  $0.1\text{dB (1000)}$

**Temperature range:**  $-40^{\circ}\text{C}\sim 85^{\circ}\text{C}$

**Features:** Coupling nut radial track minimizes the rotation needed tapping mate the connector

Any cable length option

Simplex, duplex, SM & MM available

**Application:**

Data processing network    Telecommunication networks    CATV

LAN (including FTTH and FTTD)

**Standard:** Telcordia-GR-326 and IEC standards

**Cable diameter:** 0.9mm/2.0mm/3.0mm    **Boot color:** Black for MM    **Cable Color:** Orange

**Length:** Customized (1/2/3/5/10/15/20/30/40/50meters)

**Cable Material:** PVC, LSZH, OFNP



# Products

# ETU-LINK TECHNOLOGY CO., LTD

**Name:** ST/PC-SC/PC MM Patch Cord

**Specification:**

**Insertion loss:**  $\leq 0.2\text{dB}$     **Return loss:**  $\leq -35\text{dB(PC)}$     **Repeatable:**  $0.1\text{dB}$  (1000)

**Temperature range:**  $-40^{\circ}\text{C}\sim 85^{\circ}\text{C}$

**Features:** Coupling nut radial track minimizes the rotation needed tapping mate the connector

Any cable length option

Simplex, duplex, SM & MM available

**Application:**

Data processing network    Telecommunication networks    CATV

LAN (including FTTH and FTTD)

**Standard:** Telcordia-GR-326 and IEC standards

**Cable diameter:** 0.9mm/2.0mm/3.0mm    **Boot color:** Black for MM    **Cable Color:** Orange

**Length:** Customized (1/2/3/5/10/15/20/30/40/50meters)

**Cable Material:** PVC, LSZH, OFNP





# Products

# ETU-LINK TECHNOLOGY CO., LTD

**Name:** ST/UPC-SC/UPC SM Patch Cord

**Specification:**

**Insertion loss:**  $\leq 0.2\text{dB}$     **Return loss:**  $\leq -50\text{dB(PC)}$     **Repeatable:**  $0.1\text{dB}$  (1000)

**Temperature range:**  $-40^{\circ}\text{C}\sim 85^{\circ}\text{C}$

**Features:** Coupling nut radial track minimizes the rotation needed tapping mate the connector

Any cable length option

Simplex, duplex, SM & MM available

**Application:**

Data processing network    Telecommunication networks    CATV

LAN (including FTTH and FTTD)

**Standard:** Telcordia-GR-326 and IEC standards

**Cable diameter:** 0.9mm/2.0mm/3.0mm    **Boot color:** Blue for SM    **Cable Color:** Yellow

**Length:** Customized (1/2/3/5/10/15/20/30/40/50meters)

**Cable Material:** PVC, LSZH, OFNP



# Products

# ETU-LINK TECHNOLOGY CO., LTD

**Name:** LC/UPC-SC/UPC SM Patch Cord

**Specification:**

**Insertion loss:**  $\leq 0.2\text{dB}$     **Return loss:**  $\leq -50\text{dB(PC)}$     **Repeatable:**  $0.1\text{dB}$  (1000)

**Temperature range:**  $-40^{\circ}\text{C}\sim 85^{\circ}\text{C}$

**Features:** Coupling nut radial track minimizes the rotation needed tapping mate the connector

Any cable length option

Simplex, duplex, SM & MM available

**Application:**

Data processing network    Telecommunication networks    CATV

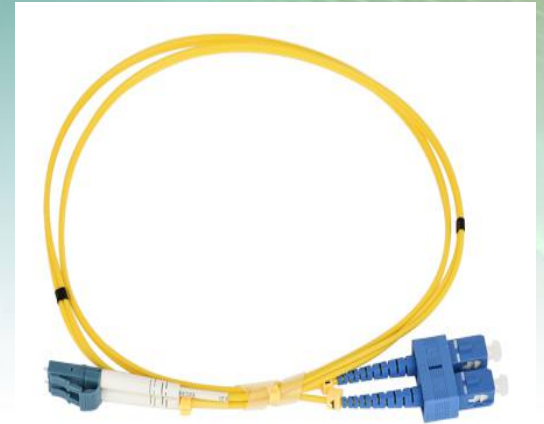
LAN (including FTTH and FTTD)

**Standard:** Telcordia-GR-326 and IEC standards

**Cable diameter:** 0.9mm/2.0mm/3.0mm    **Boot color:** Blue for SM    **Cable Color:** Yellow

**Length:** Customized (1/2/3/5/10/15/20/30/40/50meters)

**Cable Material:** PVC, LSZH, OFNP



# Products

# ETU-LINK TECHNOLOGY CO., LTD

**Name:** LC/UPC-FC/UPC SM Patch Cord

## Specification:

**Insertion loss:**  $\leq 0.2\text{dB}$     **Return loss:**  $\leq -50\text{dB(FC)}$     **Repeatable:**  $0.1\text{dB}$  (1000)

**Temperature range:**  $-40^{\circ}\text{C}\sim 85^{\circ}\text{C}$

**Features:** Coupling nut radial track minimizes the rotation needed tapping mate the connector

Any cable length option

Simplex, duplex, SM & MM available

## Application:

Data processing network    Telecommunication networks    CATV

LAN (including FTTH and FTTD)

**Standard:** Telcordia-GR-326 and IEC standards

**Cable diameter:** 0.9mm/2.0mm/3.0mm    **Boot color:** Blue for SM    **Cable Color:** Yellow

**Length:** Customized (1/2/3/5/10/15/20/30/40/50meters)

**Cable Material:** PVC, LSZH, OFNP





# Products

# ETU-LINK TECHNOLOGY CO., LTD

**Name:** SC/UPC-SC/UPC MM Patch Cord

**Specification:**

**Insertion loss:**  $\leq 0.2\text{dB}$     **Return loss:**  $\leq -35\text{dB(PC)}$     **Repeatable:**  $0.1\text{dB}$  (1000)

**Temperature range:**  $-40^{\circ}$  ~  $80^{\circ}$

**Features:** Coupling nut radial track minimizes the rotation needed tapping mate the connector

Any cable length option

Simplex, duplex, SM & MM available

**Application:**

Data processing network    Telecommunication networks    CATV

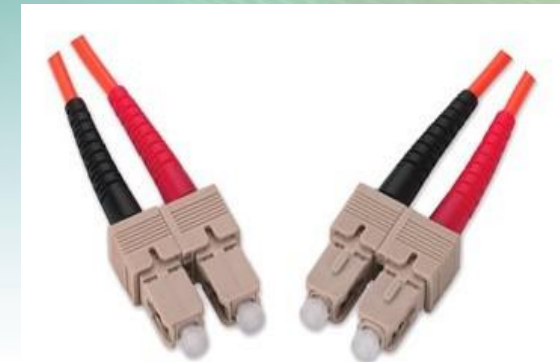
LAN (including FTTH and FTTD)

**Standard:** Telcordia-GR-326 and IEC standards

**Cable diameter:** 0.9mm/2.0mm/3.0mm    **Boot color:** Black for MM    **Cable Color:** Orange

**Length:** Customized ( 1/2/3/5/10/15/20/30/40/50meters)

**Cable Material:** PVC, LSZH, OFNP



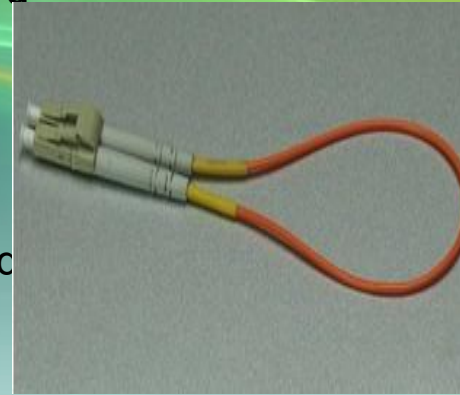
# Products

# ETU-LINK TECHNOLOGY CO., LTD

Name: LC/PC (APC) Fiber optical loop-back patch cord

## Features:

- Small Form connector- half size of standard connectors(SC ST FC)
- PC or APC polish
- Comply with the request of UL94V-O and Standard of RoHS



## Specifications:

| Item                  | Single mode            | Multi mode          |
|-----------------------|------------------------|---------------------|
| Fiber diameter        | 9/125um                | 62.5/125um 50/125um |
| Insertion loss        | PC < 0.3dB APC < 0.2dB | PC < 0.3 dB         |
| Return loss           | PC > 45 dB APC > 60 dB | PC > 25 dB          |
| Insert-pull test      | (1000 times) < 0.3 dB  |                     |
| Interchange           | < 0.2 dB               |                     |
| Operation temperature | -40°C ~ +80°C          |                     |
| Anti-tensile force    | 15kgf                  |                     |

## Ordering Information:

|           |              |                                          |
|-----------|--------------|------------------------------------------|
| LC/SCType | LC/PC LC/APC | Single mode/Multi mode OM2/OM3 loop-back |
|-----------|--------------|------------------------------------------|

## Product-OTDR Launch Cable Box

### Description:

Designed to aid in the testing of fiber optic cable when using an OTDR. The OTDR Launch Fiber box is used with Optical Time Domain Reflectometers (OTDR's) to help minimize the effects of the OTDR's launch pulse on measurement uncertainty. Available in many different configurations and fiber lengths.

### Features:

- Pulse Suppressor, Launch Box, Delay Line, Installation/Testing, Training, Calibration
- Compound Latch for positive seal and easy opening with locking feature
- Nonmetal construction will not dent, corrode, or conduce electricity
- Water and dust prove allowing the unit to be taken into almost any environment
- Case can house up to 2,000 meters of fiber
- Auto Purge Valve for changes in altitude and temperature



### Specifications:

|                         |                                |
|-------------------------|--------------------------------|
| Length x Width x Height | 9.37" x 5.56" x 2.62"          |
| Material                | SR Polypropylene               |
| Color                   | Black/Yellow                   |
| Weight                  | 0.75 kg (without fiber)        |
| Operating temperature   | -40° to +55°C                  |
| Typical Loss            | < 1dB @ 1310nm for 1000 meters |



# Products

# ETU-LINK TECHNOLOGY CO., LTD

**Name:** SC/UPC-SC/UPC SM Patch Cord

## Specification:

**Insertion loss:**  $\leq 0.2\text{dB}$     **Return loss:** PC $\geq 45\text{dB}$  UPC $\geq 50\text{dB}$     **Repeatable:** 0.1dB (1000)

**Operating temperature range:**  $-20^{\circ}\text{C}\sim 70^{\circ}\text{C}$

**Stock temperature range:**  $-40^{\circ}\text{C}\sim 85^{\circ}\text{C}$

## Features:

- Low insertion loss and back reflection loss
- Good Durability
- Good exchangeability
- High temperature stability
- Standard: Telcordia GR-326-CORE
- Any cable length option
- Simplex, duplex, SM & MM available

## Application:

Data processing network    Telecommunication networks    CATV

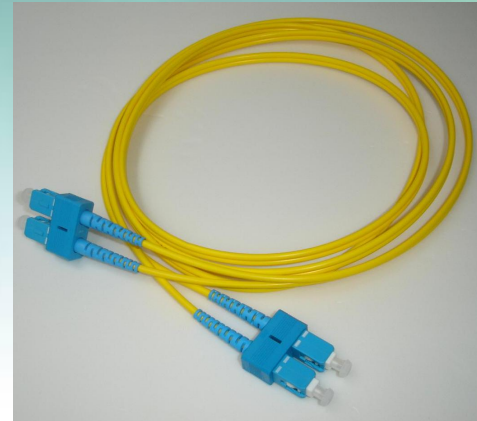
LAN (including FTTH and FTTD)

**Standard:** Telcordia-GR-326 and IEC standards

**Cable diameter:** 0.9mm/2.0mm/3.0mm    **Boot color:** Blue for SM    **Cable Color:** SM Yellow

**Length:** Customized ( 1/2/3/5/10/15/20/30/40/50meters)

The patch cord is consist of connector , boot, dust cap, cable ,shrink sleeve tube , A& B mark tube.



# Products

# ETU-LINK TECHNOLOGY CO., LTD

**Name:** SC/UPC-LC/UPC SM Patch Cord

## Specification:

**Insertion loss:**  $\leq 0.2\text{dB}$     **Return loss:** PC $\geq 45\text{dB}$  UPC $\geq 50\text{dB}$     **Repeatable:** 0.1dB (1000)

**Operating temperature range:**  $-20^{\circ}\text{C}\sim 70^{\circ}\text{C}$

**Stock temperature range:**  $-40^{\circ}\text{C}\sim 85^{\circ}\text{C}$

## Features:

Low insertion loss and back reflection loss

Good Durability

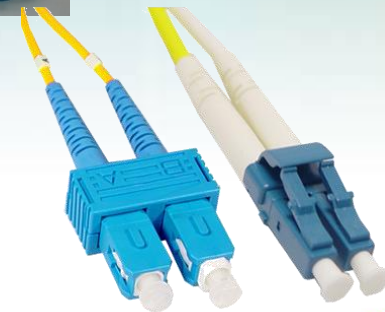
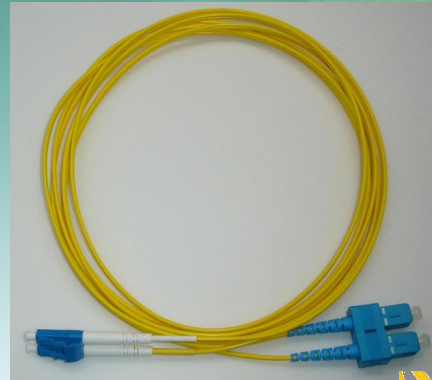
Good exchangeability

High temperature stability

Standard: Telcordia GR-326-CORE

Any cable length option

Simplex, duplex, SM & MM available



## Application:

Data processing network    Telecommunication networks    CATV

LAN (including FTTH and FTTD)

**Standard:** Telcordia-GR-326 and IEC standards

**Cable diameter:** 0.9mm/2.0mm/3.0mm    **Boot color:** Blue for SM    **Cable Color:** SM Yellow

**Length:** Customized ( 1/2/3/5/10/15/20/30/40/50meters)

The patch cord is consist of connector , boot, dust cap, cable ,shrink sleeve tube , A& B mark tube.

# Products

# ETU-LINK TECHNOLOGY CO., LTD

**Name:** LC/UPC-LC/UPC SM Patch Cord

## Specification:

**Insertion loss:**  $\leq 0.2\text{dB}$    **Return loss:** PC $\geq 45\text{dB}$  UPC $\geq 50\text{dB}$    **Repeatable:** 0.1dB (1000)

**Operating temperature range:**  $-20^{\circ}\text{C}\sim 70^{\circ}\text{C}$

**Stock temperature range:**  $-40^{\circ}\text{C}\sim 85^{\circ}\text{C}$

## Features:

Low insertion loss and back reflection loss

Good Durability

Good exchangeability

High temperature stability

Standard: Telcordia GR-326-CORE

Any cable length option

Simplex, duplex, SM & MM available



## Application:

Data processing network   Telecommunication networks   CATV

LAN (including FTTH and FTTD)

**Standard:** Telcordia-GR-326 and IEC standards

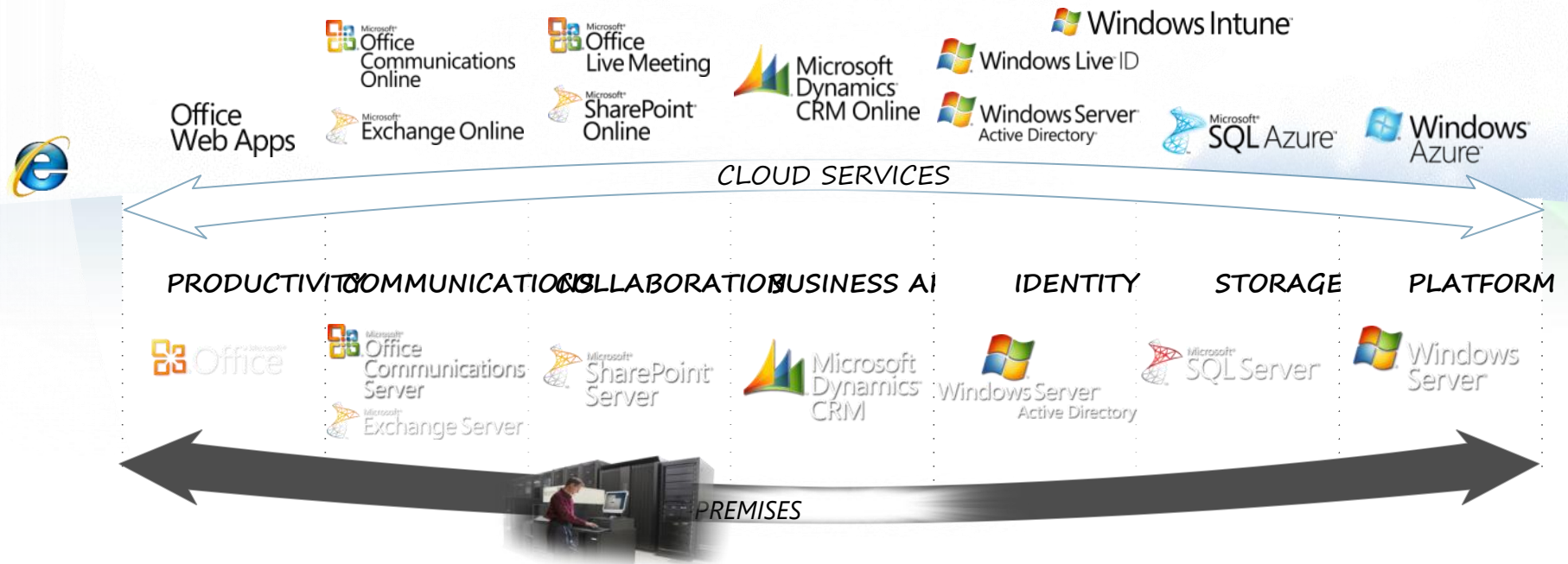
**Cable diameter:** 0.9mm/2.0mm/3.0mm   **Boot color:** Blue for SM   **Cable Color:** SM Yellow

**Length:** Customized ( 1/2/3/5/10/15/20/30/40/50meters)

The patch cord is consist of connector , boot, dust cap, cable ,shrink sleeve tube , A& B mark tube.



# Commercial Cloud Services



*Thank you for viewing*

谢谢观赏